

Draco

OF NORWAY



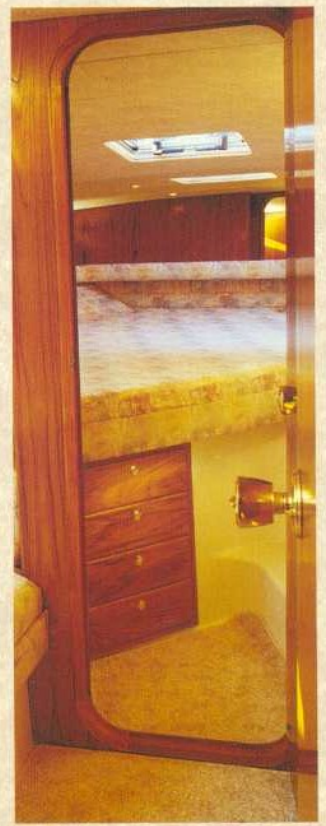
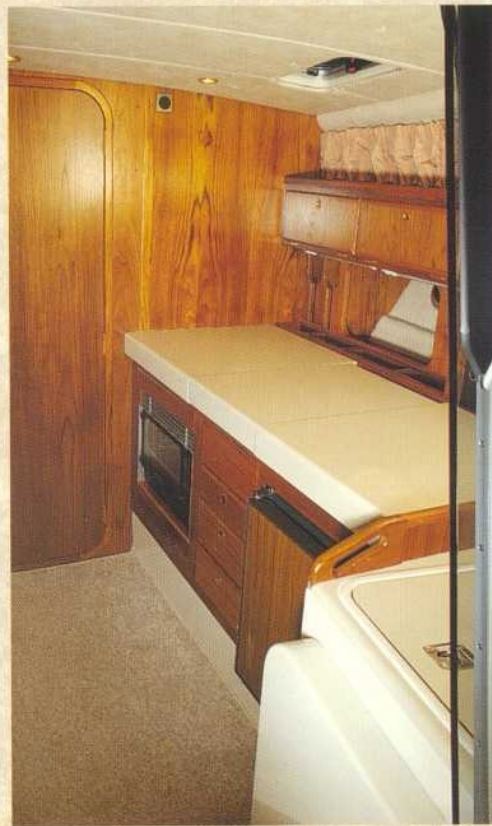
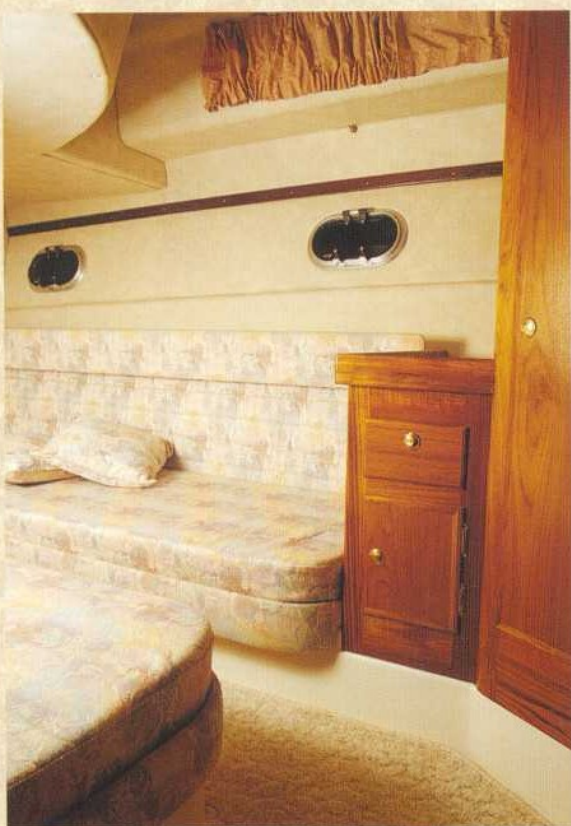
3400
Opal
3400
Zircon



3400
Opal



The majestic lines of the OPAL shine like a gem against the rocky backdrop and clear blue sea.



Innovations and luxury go hand in hand on the OPAL Flybridge from the moment you step aboard and through the full length glass sliding door into the large main saloon. The sumptuous L-shaped settee and captains chair are upholstered in top quality cream leather, concealed lighting and a full cocktail bar combine to create a feeling of luxurious tranquility.

A further sliding door separates the saloon and the steps down the companionway to the exceptionally well equipped galley and further cabins, therefore affording privacy to both.

The superb owners cabin is in the bow with the guest cabin on the port side that has twin berths converting to a very large double, and a private door to the exquisitely designed and fitted shower/toilet room.

The Opal Flybridge with duplicate electronic controls and instruments is sure to be a favourite with owners who wish to enjoy offshore cruising in all weather conditions. For the sunnier days there are sun bathing cushions for the forward deck and a sunbed on the Flybridge, additional to the three action seats.

The worthy flagship of the DRACO range.

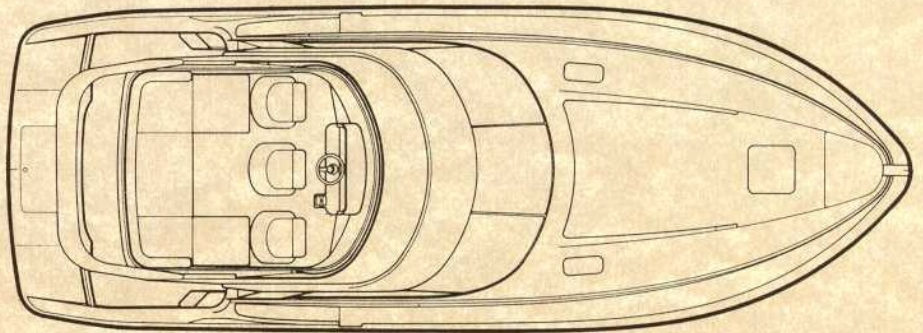


STANDARD EQUIPMENT AND SPECIFICATION

3400 OPAL

DIMENSIONS

LOA	10,55 m	(34 ft 6 in)
Beam	3,85 m	(12 ft 6 in)
Height overall		
without targa arch	4,00 m	(13 ft 1 in)
Draft	1,00 m	(3 ft 4 in)
Weight		
w/twin KAMD42V	6800 kgs	(14978 lbs)
Deadrise	20°	
Fuel capacity	650-700 L	(145-156 imp. gallons)
Water capacity ...	210 L	(47 imp. gallons)
Sleeps	6	



HULL AND CONSTRUCTION

Designed by Hans J. Johnsen. Deep "V", 20° deadrise with double shaft tunnels. 2 spray deflectors. NGA-gelcoat against osmosis. Glassfibre laid up by hand and sprayed with unidirectional rovings. Transverse and longitudinal strengthening stringers throughout hull with high density inotan. Hull/deck joint bolted and bonded.

DECK

Stainless steel stemhead roller. Twin bow, spring and stern cleats. 2 line stainless steel pulpit and deck rails. Full set of navigation lights. Covered water filler. Concealed fuel filling compartment. Moulded non-slip deck surface. Bathing platform with concealed transom ladder. Transom fender stowage.

FLYBRIDGE

Double moulded flybridge with integrated deck lights, 3 action seats and convertible U-sofa with backrest. Targa arch with radio and TV-antenna, horn nav. lights and halogen deck lights. Steering position with safety control switch. Echo sounder, sunlog, compass, engine repeter instrumentation, with alarms. Hydraulic steering. Microcomander electronic controller. Anchor winch control, and trim tab controls with indicators. Wooden steering wheel. Tinted wind spoiler with surrounding stainless steel rail. Entrance hatch in tinted acrylic with alum. framing. Fill in cushions for sunbathing area. Self draining flooring.

HELM POSITION

Single action seat in cream ivory leather with footrest. Curved panoramic windshield in clear safetyglass. Hydraulic steering. Microcomander electronic controller. (Sterndrive trim controls). Trim tab controls with indicators. Full engine instrumentation including tachometers, oil pressure gauges, temperature gauges and battery condition indicators. High speed compass with light. Autohelm tridra instr. with echosounder, speedometer, distance log and seawater temp. Remote control for anchor winch. Chart table. Fuel contents gauge. Domestic water contents gauge. Engine hour meters. Circuit breaker switches for navigation and panels lights, bilge pump and engine room extractor fan (petrol only). Burr walnut laminate instrumentpanel. Wooden steering wheel.

COCKPIT

Self draining flooring. Stowage lockers with pneumatic support-struts under side flooring. Main stowage hatch and engine access hatch with light and pneumatic support struts. Separate 220 V shoreline switch panel with plugs. Moulded non slip surface. Double emergency bilge pumps. Port and starboard entrance doors from swimming platform.

INTERIOR FURNISHINGS

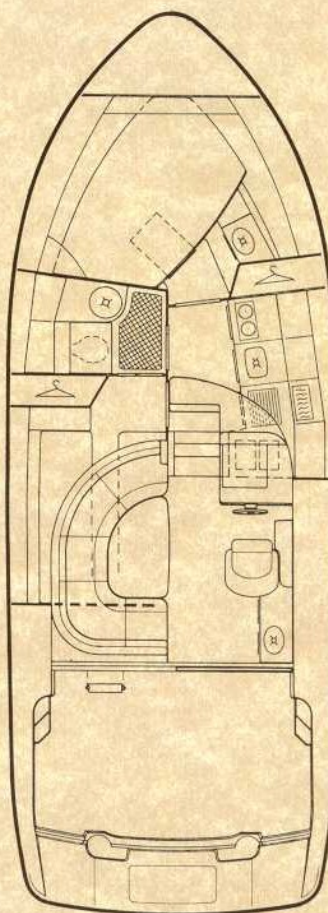
Choice of co-ordinating carpets, upholstery and curtain fabrics. Joinery and woodwork in teak below deck. In saloon joinery and woodwork are made in mahogany and burr walnut. All seats in saloon in special cream-ivory leather.

SALOON

Headroom 1,90 m. L shaped dinette in cream ivory leather. Adjustable dining table. Full panoramic view from seating. Sliding side windows. Patio door with tinted glass, lockable in open and closed position. Cocktail galley with work light. Sink. Hot and cold water. Refrigerator. Drawers. Bar with light and tinted acrylic door. Integrated side lights. Overhead reading lights. TV-plugs. 12 V and 220 V plugs.

GALLEY

Three burner gas hob or 2 plate Wallas stove with top cover, plus oven. 60 L. refrigerator. Twin sinks with hot and cold mixer tap. Full sliding and folding cover. Ceiling opening hatch. Microwave oven.



FORWARD CABIN

2,1 m x 1,4 m (max) double berth. Wardrobe. Stowage under berth. 4 Drawer set. 4 ceiling lights. Escape hatch to forward deck. Twin opening portholes. Mirror. TV-shelf w/plug. 2 reading lights. Vanity unit with drawer, illuminated mirror, and hot and cold mixer taps.

AFT CABIN

2 single berth 2 m x 0,65 m or one double berth 2 m x 1,8 m. Cupboard. Wardrobe, shelf. Ceiling and reading lights. 2 opening portholes. Direct entrance to toilet room.

SHOWER AND TOILET COMPARTMENT

Shower with hot and cold water. Shower rail and curtain. Automatic shower tray pumpout system. WC, with seacocks to outlet and inlet. Hand basin with hot and cold water. 240v shaving point. Halogen ceiling lights. Opening porthole. Towel and toilet paper holders. Toothbrush and glass holder. Hooks. Cabinet with Mirror Door. Eye level lockers.

ELECTRICAL SYSTEMS

All 240 volt and 12 volt circuits protected by breakers on main electrical load control panel in saloon.

12 VOLT

2 x 105 a.h. batteries wired in parallel supplying domestic services and engine starting. 1 x 105 a.h. battery exclusively for starboard engine starting. (Domestic batteries accept charge from both engines. Emergency battery coupling system permits starboard engine battery to start port engine if domestic batteries accidentally discharged.)

240 VOLT

240v shorepower supply. Socket outlets in saloon, galley and cabins. Wiring diagram provided in handbook. Battery charger.

ENGINES

GRP engine access hatch with pneumatic support struts. Engine room soundproofing. Electric engine room extractor fan. Aerodynamically designed engine air intakes. Engine room fire extinguishers. Electric bilge pump. Engine manufacturer's handbook and tools.

FUEL SYSTEM

2 x 350 L. (diesel) or 1 x 650-700 L. (gasoline) marine grade alloy fuel tanks. On/off control accessible through cockpit locker. Fuel tank isolated between full height bulkheads. Lockable, concealed fuel filler and vent pipes. Copper fuel lines. High capacity water separators and filters on diesel installations.

FRESHWATER SYSTEM

210 L. water tank under front berth. 30 L. warm water tank. 240v shorepower immersion heater. Automatic, pumped pressurised supply.

GAS

All gas burners fitted with flame failure protection devices. Gas bottle stowage in self venting cockpit locker. Copper, supply pipe. single tail feed with regulator.

STANDARD FEATURES

Reversible 700 watt electric anchor winch. Electro-hydraulic trim tabs. Echo sounder with audible shallow water alarm. Stereo radio/cassette player with saloon and cockpit speakers. Multi Directional TV Aerial. Hot and cold water transom shower. Saloon and galley refrigerators.

PERFORMANCE ESTIMATES

Diesel:	
2 x Volvo Penta	
KAMD 42 V-drive:	29-30 knots
2 x Volvo Penta	
KAD 42 DP:	34-36 knots
Petrol:	
2 x Volvo Penta 570 DP:	33-35 knots

Performance estimates are not guaranteed, but are for guidance use only. Speed result may vary on some boats depending on such factors as weather, the conditions of propellers, boat weight and boat bottom.

This specification may be changed at any time without notice.

DRACO FOR THE NINETEEN NINETIES



For these 4 models, ask for separate brochure.

Draco
OF NORWAY

DRACO AS, P.O. Box 114, N-4401 Flekkefjord,
Norway - Tel. 47-43-23155 - Fax 47-43-24667 -

AGENT / DEALER

